

RENEWAL PARTS LIST			GTR NO.	SHT.	CTD. NO.
			L21-007	1	2
PARTS LIST TITLE : ASSEMBLY OF LNC COMBUSTION AFTER CHAMBER					
REFERENCE DWG. :		DWG NO.	GR NO.	REV.	
		310QC52-080		0	
MANUFACTURE DWG. :					
REC OM.	PT. NO.	NAME OF PART	Q'TY.	MANUFACTURE ID. NO., SIZE, ETC.	REMARKS
	1	FLOW SLEEVE	1		NO. 1
	2	FLOW SLEEVE	1		NO. 2
	3	FLOW SLEEVE	1		NO. 8
	4	FLOW SLEEVE	1		NO. 9
	5	FLOW SLEEVE	1		NO. 10
	6	FLOW SLEEVE	5		NO. 3, 4, 5, 6, 7
	8	12 POINT BOLT	200	5/8-11UNC L64	
	9	12 POINT BOLT	120	5/8-11UNC L98	
	10	12 POINT NUT	120	5/8-11UNC	
	11	KNOCK BOLT	20	φ14, L90	
	12	12 POINT NUT	20	3/8-16UNC	
	13	HEXAGON HEAD BOLT	20	5/16-18UNC L16	
	14	HEXAGON HEAD BOLT	40	5/16-18UNC L19	
	15	CLAW WASHER	40	5/16-18UNC	
	16	VORTEX GASKET	20		
	17	STOPPER	10		
	18	BLIND FLANGE	2		
	19	12 POINT BOLT	8	5/8-11UNC L35	
	20	GASKET	4		
	21	SLEEVE	2		
<b>NOTE</b> * Marks in RECOM. show recommended spare parts. Contact us Unit 402, 4th floor, No. 42, Sharifi St., Jordan St., Tehran, Iran Tel: 0098-2188779847-Fax 0098-2188779514 www.setc.ir-info@setc.ir Mob:00989123840728					

RENEWAL PARTS LIST			GTR NO.	SHT.	CTD. NO.
			L21-007	2	-
PARTS LIST TITLE : ASSEMBLY OF LNC COMBUSTION AFTER CHAMBER					
REFERENCE DWG. :		DWG NO.	GR NO.	REV.	
		310QC52-080		0	
MANUFACTURE DWG. :					
REC OM.	PT. NO.	NAME OF PART	Q'TY.	MANUFACTURE ID. NO., SIZE, ETC.	REMARKS
	22	PIPE	10		
	23	TUBE	10		
	24	TUBE	10		
	25	GLAND	20		
	26	STOPPER	20		
	28	HEXAGON HEAD BOLT	200	1/2-13UNC L34	
	31	RETAINER	20		
	32	HEXAGON HEAD BOLT	8	1/2-13UNC L25	
	34	LINER	8		
	35	LINER	2		FOR PPARK PLUG
	36	CHAMBER	3		NO. 4, 5, 6
	37	CHAMBER	2		NO. 2, 7
	38	CHAMBER	1		NO. 3
	39	CHAMBER	1		NO. 8
	40	CHAMBER	3		NO. 1, 9, 10
	42	WASHER	40	1/2-13UNC	
	44	PACKING	40		
	45	PACKING	20		
	46	RING	20		
<b>NOTE</b> * Marks in RECOM. show recommended spare parts. Unit 402, 4th floor, No. 42, Sharifi St., Jordan St., Tehran, Iran Tel: 0098-2188779847-Fax 0098-2188779514 www.setc.ir-info@setc.ir Mob:00989123840728					

310QC52-080

LOOKING DOWN STREAM

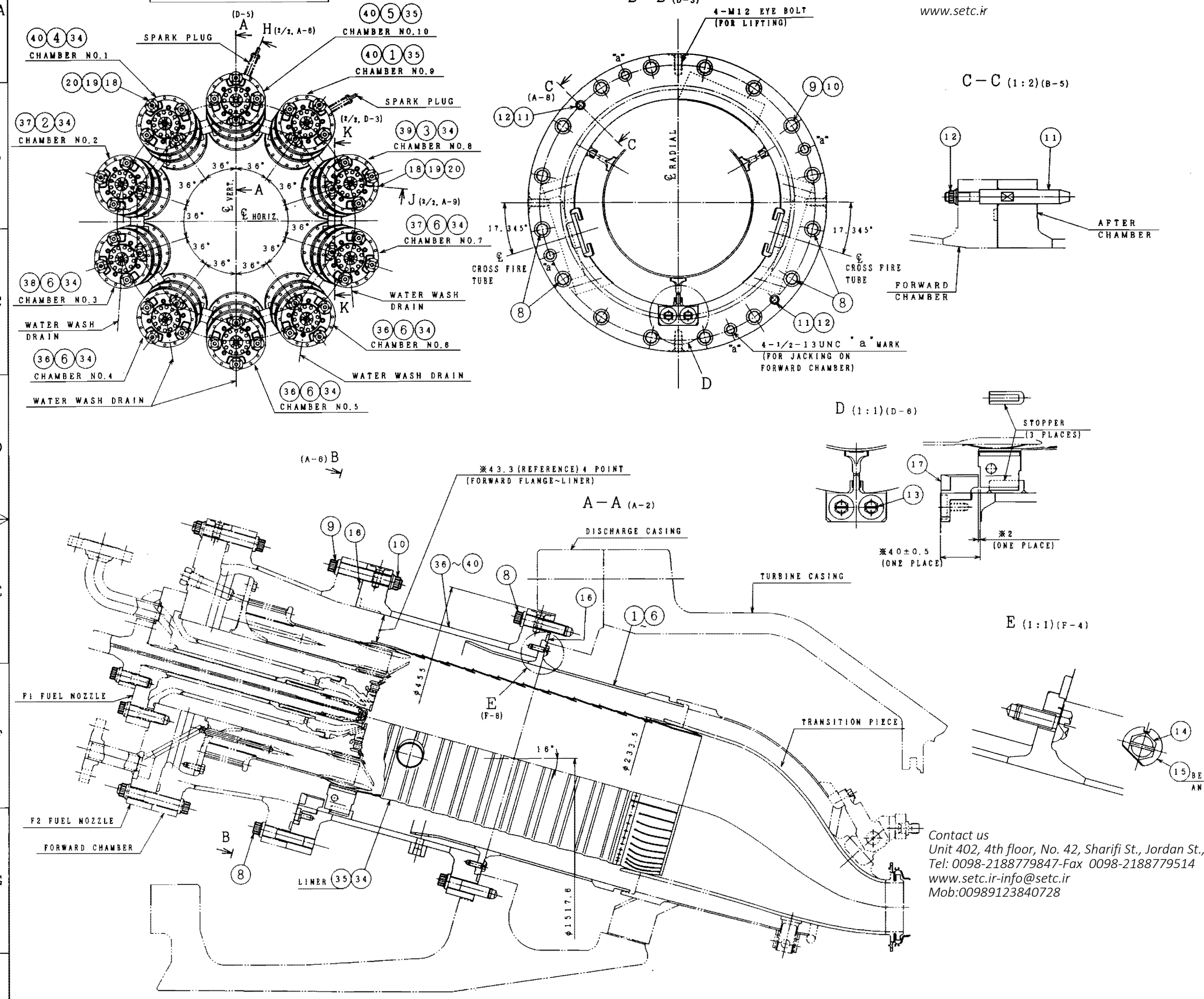
B-B (D-3)

www.setc.ir

C-C (1:2)(B-5)

D (1:1)(D-6)

E (1:1)(F-4)



PART No.	NAME OF PART	QTY	MATERIAL	REMARKS
1	FLOW SLEEVE	1	CARBON STEEL	NO. 1
2	FLOW SLEEVE	1	CARBON STEEL	NO. 2
3	FLOW SLEEVE	1	CARBON STEEL	NO. 8
4	FLOW SLEEVE	1	CARBON STEEL	NO. 9
5	FLOW SLEEVE	1	CARBON STEEL	NO. 10
6	FLOW SLEEVE	5	CARBON STEEL	NO. 3, 4, 5, 6, 7
7				
8	12 POINT BOLT	20	Cr-Mo-V STEEL (SNB16)	5/8-11UNC L04
9	12 POINT BOLT	120	Cr-Mo-V STEEL (SNB16)	5/8-11UNC L08
10	12 POINT NUT	120	Cr-Mo-V STEEL (SNB16)	5/8-11UNC
11	KNOCK BOLT	20	Cr-Mo-V STEEL (SNB16)	#14L90
12	12 POINT NUT	20	Cr-Mo-V STEEL (SNB16)	3/8-18UNC
13	HEX. HEAD BOLT	20	Cr-Mo-V STEEL (SNB16)	5/16-18UNC L16
14	HEX. HEAD BOLT	40	Cr-Mo-V STEEL (SNB16)	5/16-18UNC L19
15	CLAW WASHER	40	STAINLESS STEEL	5/16-18UNC
16	VORTEX GASKET	20	STAINLESS STEEL	
17	STOPPER	10	CARBON STEEL	
18	BLIND FLANGE	2	CARBON STEEL	
19	12 POINT BOLT	8	Cr-Mo-V STEEL (SNB16)	5/8-11UNC L35
20	GASKET	4	Ni BASE ALLOY STEEL	
21	SLEEVE	2	STAINLESS STEEL	
22	PIPE	10	CARBON STEEL	
23	TUBE	10	STAINLESS STEEL	
24	TUBE	10	STAINLESS STEEL	
25	GLAND	20	CARBON STEEL	
26	STOPPER	20	CARBON STEEL	
27				
28	HEX. HEAD BOLT	20	Cr-Mo-V STEEL (SNB16)	1/2-13UNC L34
29				
30				
31	RETAINER	20	Ni BASE ALLOY STEEL	
32	HEX. HEAD BOLT	8	Cr-Mo-V STEEL (SNB16)	1/2-13UNC L25
33				
34	LINER	8	Co BASE ALLOY STEEL	
35	LINER	2	Co BASE ALLOY STEEL	FOR S/P
36	CHAMBER	3	CARBON STEEL	NO. 4, 5, 6
37	CHAMBER	2	CARBON STEEL	NO. 2, 7
38	CHAMBER	1	CARBON STEEL	NO. 3
39	CHAMBER	1	CARBON STEEL	NO. 8
40	CHAMBER	3	CARBON STEEL	NO. 1, 9, 10
41				
42	WASHER	40	STAINLESS STEEL	1/2-13UNC
43				
44	PACKING	40		
45	PACKING	20		
46	RING	20	CARBON STEEL	

NOTES

- KEEP THE GAP  $6.1 \pm 0.38$ mm BETWEEN GLAND (25) & CHAMBER. (SEE DETAIL P (SH. 2))
- BOLT TIGHTNING TORQUE IS PER DWG# 310RB36-562.
- HOLES OF SPARK PLUG AND FLAME DETECTOR ARE IN LINE WITH HOLE OF LINER BY USING JIG. (SEE SECT. H-H & J-J (SH. 2))
- AT ASSMBLY, MEASURE THE DIMENSIONS INDICATED BY \* MARK. (3 PLACES)

Contact us  
 Unit 402, 4th floor, No. 42, Sharifi St., Jordan St., Tehran, Iran  
 Tel: 0098-2188779847-Fax 0098-2188779514  
 www.setc.ir-info@setc.ir  
 Mob:00989123840728

ZONE	REV.	DESCRIPTION	REVD.	CHND.	APPD.	DATE
1						
2						
3						

SIGNATURES	DATE	TITLE
DRW. S. SATO	2007-07-10	OUTER CASE -AFTER
CHD. O. SAKUDA	2007-07-11	
APPD. N. MAMURA	2007-07-11	
Hitachi, Ltd. Tokyo Japan		DWG. No. 310QC52-080
		SH. REV. 1/2 0

A

B

C

D

E

F

G

H

A

B

C

D

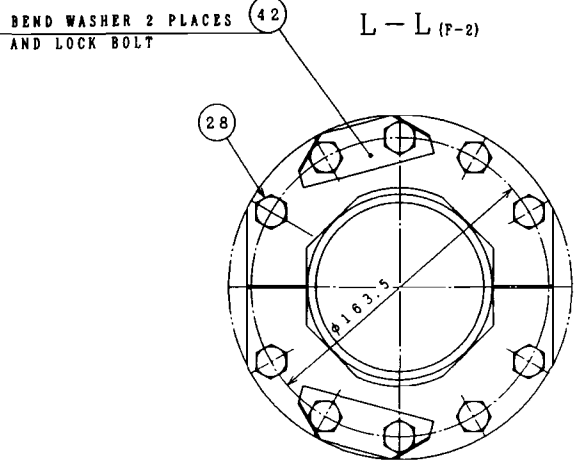
E

F

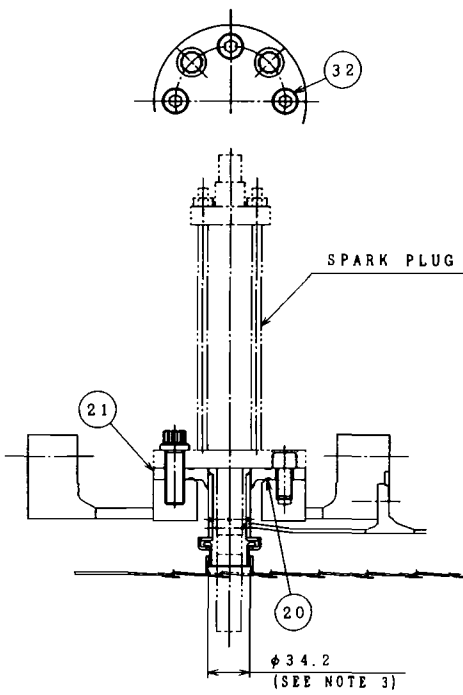
G

H

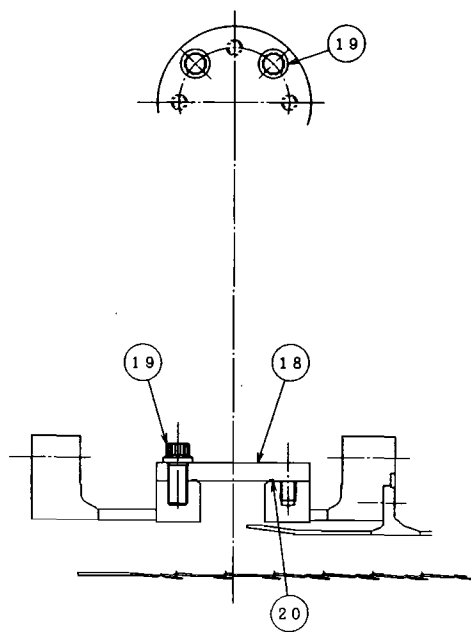
www.setc.ir



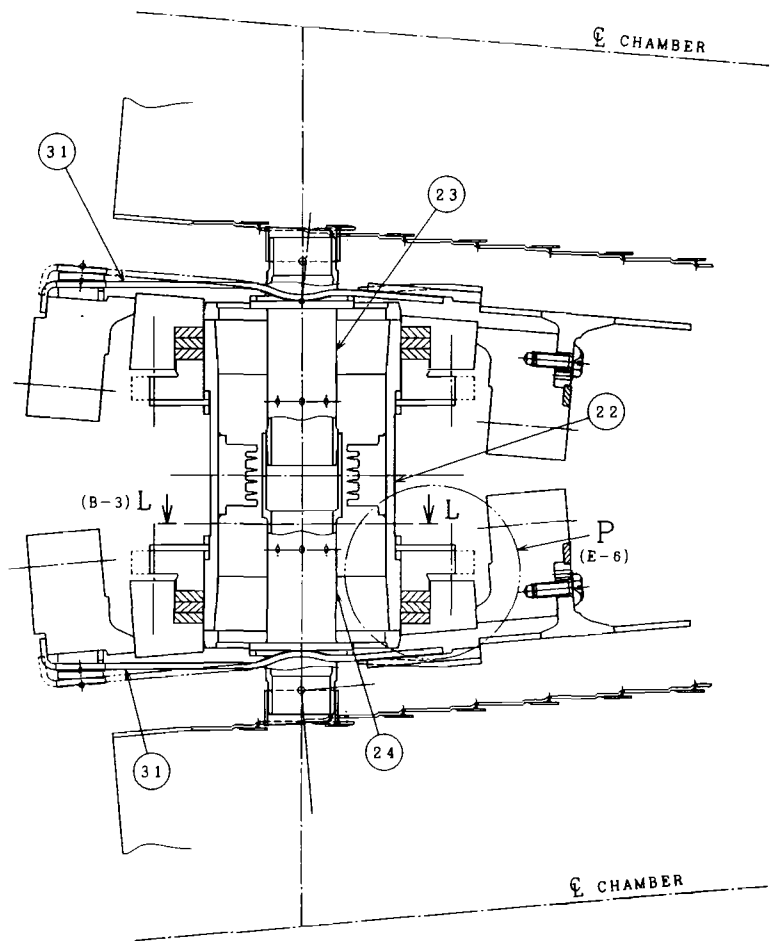
H-H (1/2, A-3)  
(CHAMBER NO. 9, 10)



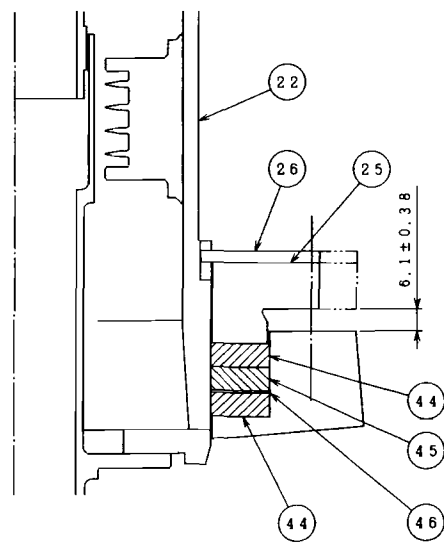
J-J (1/2, B-4)  
(CHAMBER NO. 1, 8)



K-K (1/2, B-3)



P (1:1) (F-4)



Contact us  
 Unit 402, 4th floor, No. 42, Sharifi St., Jordan St., Tehran, Iran  
 Tel: 0098-2188779847-Fax 0098-2188779514  
 www.setc.ir-info@setc.ir  
 Mob:00989123840728

ZONE	REV.	DESCRIPTION	REVD.	CHKD.	APPD.	DATE
REVISIONS						
1						
2						
3						